



EPIC LUX
LAB EDITION
HEADPHONES

We love that you are rocking JLab!
We take pride in our products and fully stand behind them.



YOUR WARRANTY

All warranty claims are subject to JLab authorization and at our sole discretion. Retain your proof of purchase to ensure warranty coverage.



CONTACT US

Reach out to us at support@jlab.com or visit jlab.com/contact

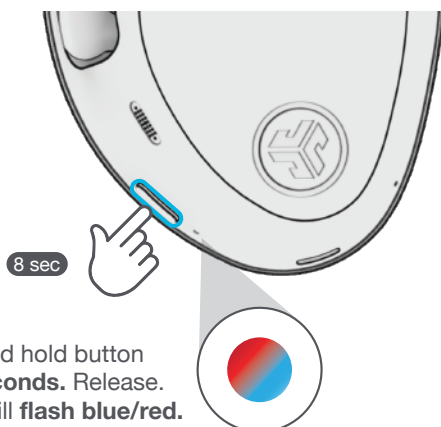
REGISTER TODAY

jlab.com/register

Product updates | How-to tips
FAQs & more

PAIR UP

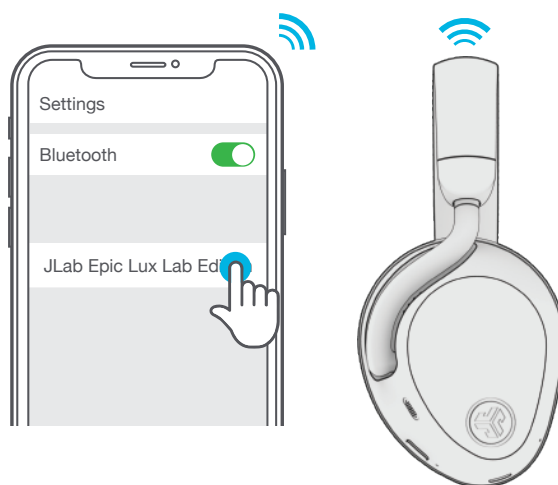
1



Press and hold button for **8 seconds**. Release. Lights will **flash blue/red**.

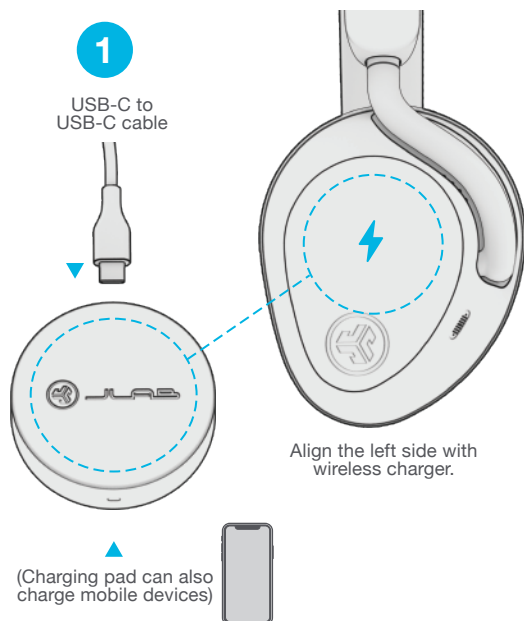
2

Select JLab Epic Lux Lab Edition in your device settings to connect.



GET CHARGED (WIRELESS)

1



USB-C to USB-C cable

Align the left side with wireless charger.

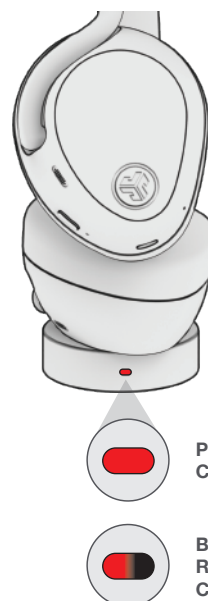
(Charging pad can also charge mobile devices)

2



Auto OFF

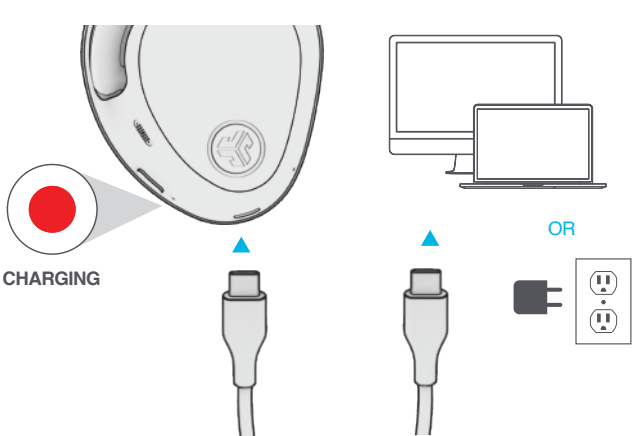
3



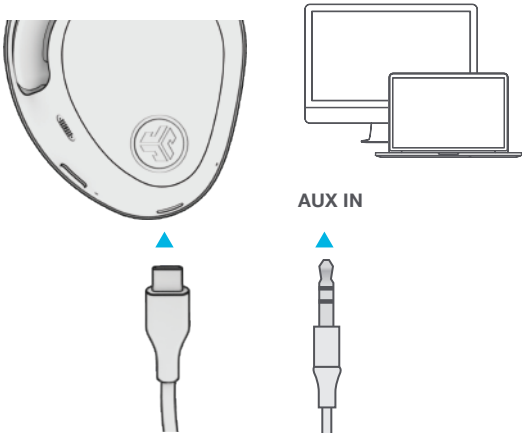
PULSE RED = CHARGING

BLINKING RED = REPOSITION TO CHARGE

GET CHARGED (WIRED)



WIRED MODE



GO AHEAD, PRESS THE BUTTON

1x Press ● 2x Press ●● Press Hold —

PLAY/PAUSE ●

ANSWER/HANG UP ●

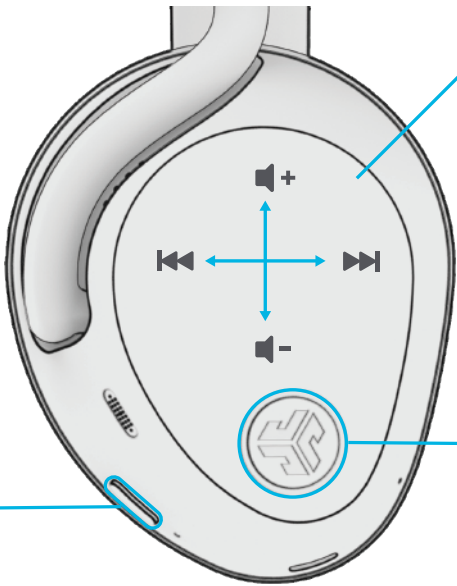
REJECT 3 sec

POWER 5 sec

BLUETOOTH PAIRING 8 sec

SIRI/OK GOOGLE ●●

SWITCH EQ ●●●



Cover earcup with hand for instant **Be Aware**

More tap controls activated via **JLAB APP**

ANC/BE AWARE ●

NOISE CONTROL ON/OFF —

SPATIAL AUDIO ON/OFF ●●

MULTIPOINT

1

Once **FIRST** device is connected, turn off Bluetooth in device settings. Epic Lux Lab Edition will auto enter Bluetooth Pairing.



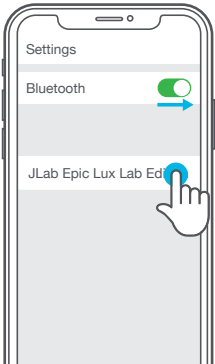
2

Enter your **SECOND** device Bluetooth settings and connect to Epic Lux Lab Edition.



3

Enter your **FIRST** device settings. Turn on Bluetooth and reconnect to Epic Lux Lab Edition.



LabShare (Share with multiple Epic Lux Lab Edition headphones)

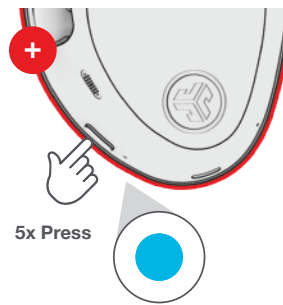
1 Connect **FIRST** headphone to device.



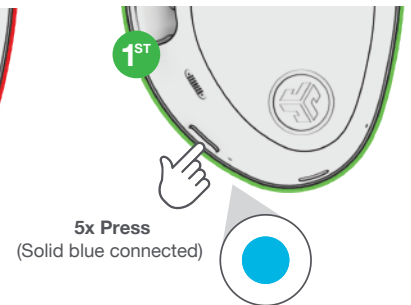
2 **ADDITIONAL** headphone should be powered off. **Press hold** until flashing blue/red.



3 Then **5x Press** and blinks blue.



4 **FIRST** headphone **5x Press** to share.



DOWNLOAD THE MOBILE APP

Customize Epic Lux Lab Edition features and update the latest software.



SCAN ME



[Shop products](#) | [Product alerts](#) | [Burn-in your headphones](#)

JLab Store + Burn-in Tool



[JLAB.COM](https://www.jlab.com)